

MODERN
MARVIN SIGNATURE® COLLECTION



THE SPIRIT OF MODERN DESIGN LIVES ON.

BORN FROM AND INFORMED BY THE NEEDS OF ARCHITECTS AND BUILDERS, OUR MODERN LINE IS INTENTIONAL IN BOTH PROCESS AND PRODUCT.

We've considered how every detail can serve you and your vision, guided by the quality and innovation that only Marvin can deliver.

THIS IS DESIGN IN YOUR HANDS.

THIS IS OUR MODULAR SYSTEM.

Every product works together as part of a visual system to help you design and configure with ease and confidence. Consistent sightlines across all products—along with special innovations like our integrated mull channel—maintain the clean aesthetic so central to modern design.

Pictured below: Modern Direct Glaze and Casement windows (left) and the Modern Multi-Slide door (right)
Certified mulling options are available

CONSISTENT SIGHTLINES

MINIMIZE SYSTEM
ALIGNMENT GUESSWORK

INTEGRATED
MULL CHANNEL

PRESERVES SIGHTLINES AND SUPPORTS
STRUCTURAL PERFORMANCE

CRANK OUT AND PUSH OUT
CASEMENTS AVAILABLE

MAINTAINS CONSISTENT
NARROW SIGHTLINES
ACROSS ALL PRODUCTS

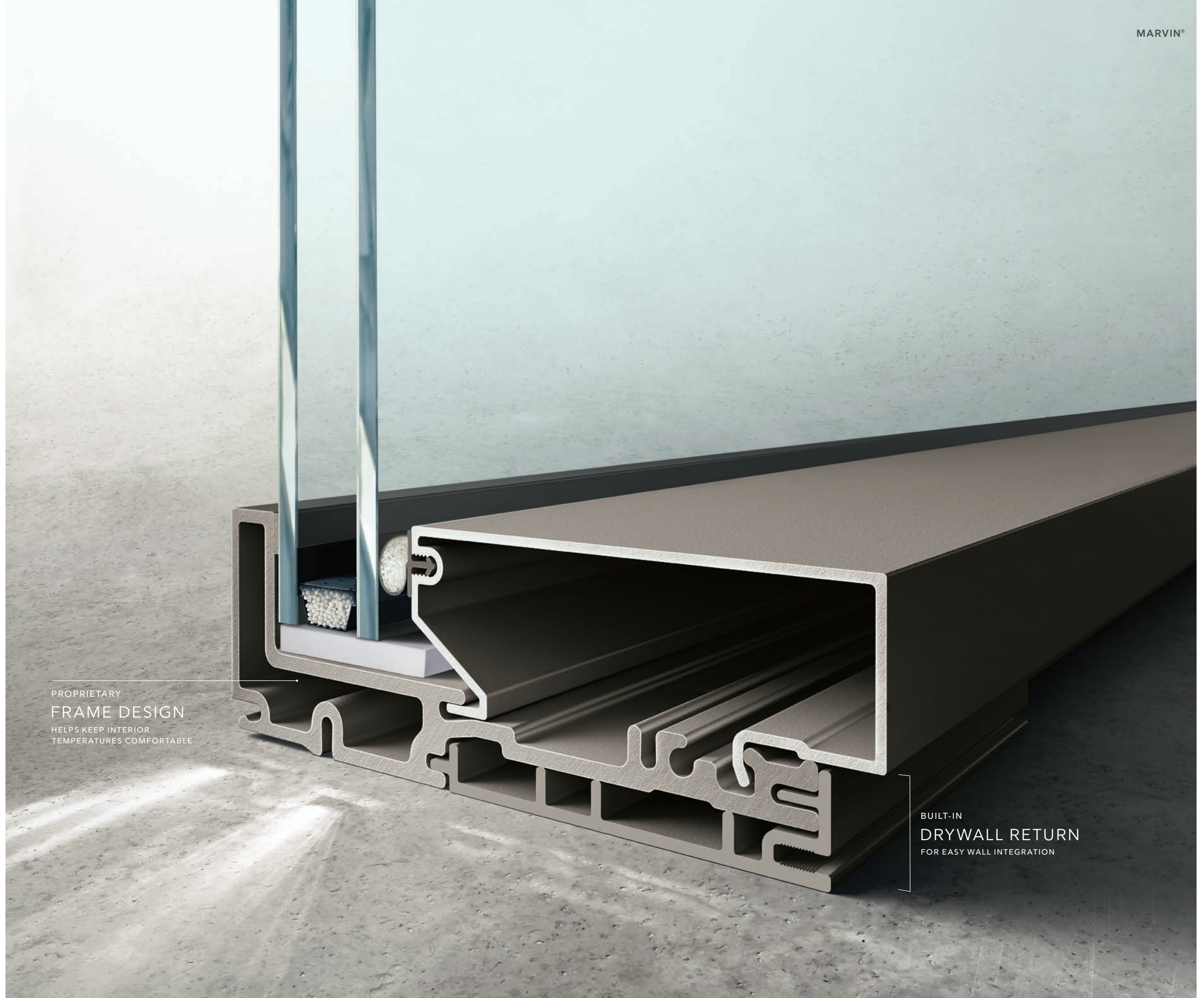
PREFABRICATED AND
PRE-CONFIGURED
COMPONENTS SAVE
ON INSTALLATION TIME

THIS IS POWER IN SIMPLICITY.

THIS IS OUR PROPRIETARY FRAME.

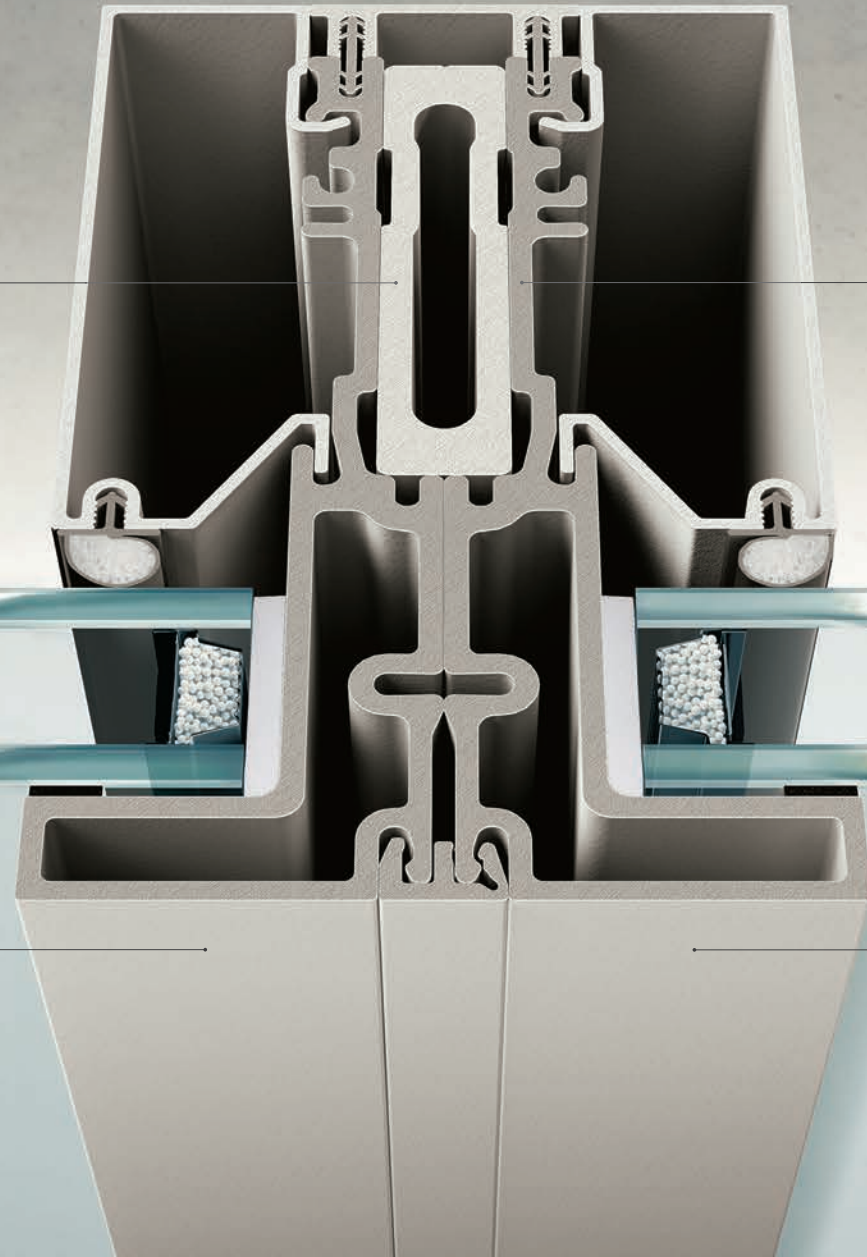
A new frame design reimagines how modern windows and doors can perform. From exterior to interior, our proprietary High-Density Fiberglass infuses the Modern window and door frame with superior strength and thermal performance. The frame also features an integrated mull channel that enables mull reinforcement while maintaining sightlines and preserving thermal efficiency.

Pictured right: Modern Direct Glaze window cross-section



PROPRIETARY
FRAME DESIGN
HELPS KEEP INTERIOR
TEMPERATURES COMFORTABLE

BUILT-IN
DRYWALL RETURN
FOR EASY WALL INTEGRATION



THE FRAME'S INTEGRATED
MULL CHANNEL
 ENABLES MULL REINFORCEMENT WITHOUT
 ALTERING SIGHTLINES

THERMALLY EFFICIENT
 TO PERFORM IN DEMANDING CLIMATES

DURABLE FINISH
 MEETS THE HIGHEST INDUSTRY STANDARDS

REVOLUTIONARY HIGH-DENSITY
FIBERGLASS MATERIAL

THIS IS PERFORMANCE BEYOND EXPECTATIONS.

THIS IS HIGH-DENSITY FIBERGLASS.

We envisioned more performance potential for modern windows and doors. So we developed High-Density Fiberglass, a revolutionary material that echoes the look of its modern counterparts with better thermal efficiency.

Pictured above: Modern Direct Glaze mullied window cross-section

ELEMENTAL
ALUMINUM
INTERIOR
WITH LOW-GLOSS FINISH

STRENGTH AND DURABILITY
RATED UP TO PG45
FOR IMPRESSIVE PERFORMANCE

DETAILS THAT
ENHANCE
THE VIEW
LIKE CONCEALED FASTENERS,
MINIMAL BLACK SPACER BARS,
AND BLACK SEALANT

THIS IS HOW IT ALL

COMES TOGETHER.

Combine product ingenuity with pure modern aesthetics and the result is truly stunning. Our Modern line is made to be built big and perform at scale, complemented by the power of critical design details. A low-gloss aluminum interior adds an elemental feel. Black spacer bars and black sealant engineered to maintain a clean daylight opening minimizes visual distractions. And internal covers completely disguise fasteners for clean, crisp edges.

Pictured left: Modern Multi-Slide door with a Clear Anodized interior finish

THIS WAS MADE FOR YOU.

WE PARTNERED WITH ARCHITECTS AND BUILDERS TO DEVELOP A PROCESS THAT ANSWERS THEIR NEEDS AT EVERY STEP ALONG THE WAY.



DELIVERY

We worked to create packaging and delivery systems that help you plan better and make the best use of your time and resources.



It begins with **PRODUCT WEIGHTS** listed on the quote and order confirmation—so you can plan proper equipment and resources in advance. We also provide prominent **WEIGHT LABELS** on every Modern product for easy on-site reference.



All products are packaged to protect components during shipping and handling. Ergonomic **LIFT POINTS** on each end of the unit help you leverage heavy products. Staple-free **CARDBOARD BOOTS** are fully wrapped around each corner. Dual skid plates provide rigidity and maneuverability, so you can slide products across different floor surfaces.

OTHER CONSIDERATIONS

- + Glass is covered with protective film
- + Each unit is stretch wrapped



INSTALLATION

On the job site, efficiency is key. So we created thoughtful products and accessories that ensure the installation runs smoothly.



A **JOB BOX** contains all the important parts and documentation you need, in one convenient place. Specially stocked according to your order, inside every job box you'll find:

- + Product hardware
- + Installation screws
- + Injection sealant
- + Installation instructions
- + Order information
- + Warranty registration
- + Touch-up and repair kits
- + And more

Never lose time tracking down an extra part or reference material.

OTHER CONSIDERATIONS

- + Pre-fabricated and pre-configured components reduce install time
- + Drywall recess in the frame accepts a drywall return for seamless integration



MADE TO BE BUILT BIG AND PERFORM AT SCALE.

MODERN WINDOWS



INTERIOR VIEW – PUSH OUT AWNING SHOWN IN EBONY WITH MATTE BLACK HARDWARE



INTERIOR VIEW – CRANK OUT AWNING SHOWN IN EBONY WITH MATTE BLACK HARDWARE

MODERN AWNING WINDOW

FEATURES

Crank Out and Push Out available

Sleek and modern form

Numerous sizes and configurations available, including right- or left-hand operating

Screens are intentionally designed to achieve a cohesive look with the window

Frame recess accepts a drywall return

Horizontal or vertical ribbon mulling capabilities

HARDWARE FOR ALL AWNING

Concealed multi-point lock system

One locking lever to engage or disengage multi-point locks

Stainless steel hinges

Proprietary Crank Out and Push Out designed hardware

HARDWARE FOR PUSH OUT

Discreet, nested handle at the sash and frame

HARDWARE FOR CRANK OUT

Exclusive rotating handle design

GLASS OPTIONS

Dual or triple-pane insulated glass

Interior cover depths vary based on glass thickness

Black spacer and dark silicone sealant

Low E1, E2, E3, ELR, or ERS glass options

Specialty glass: frosted, obscure, and gray or bronze tint

Argon or Krypton-Argon blend gas

CONFIGURATIONS AND MULLING

Jamb depth 4 1/2"

Awning to awning mullied frames 5 9/16" wide

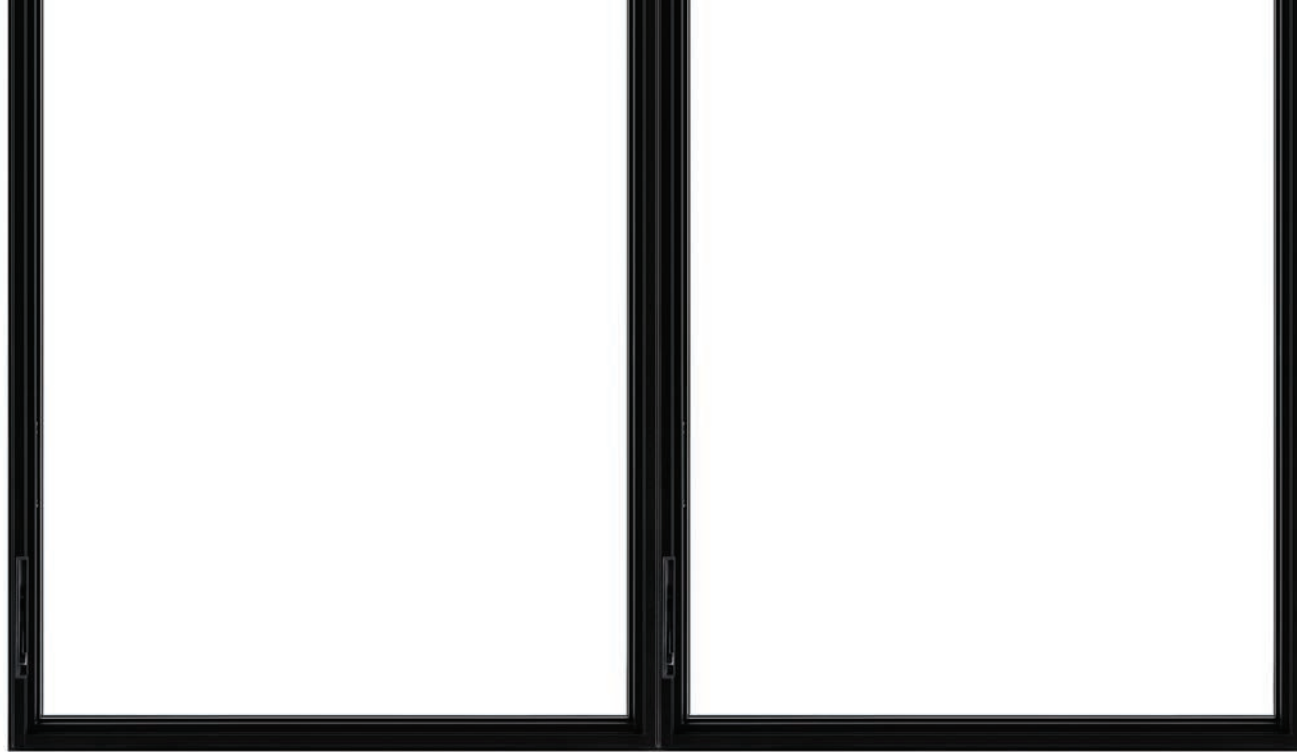
Seamless mullied assemblies with aluminum reinforcement

THERMAL PERFORMANCE

Dual-pane IG low E2 with Argon 0.28 U-Factor

UNIT TYPE	AIR TESTED TO PSF	WATER TESTED TO PSF	DESIGN PRESSURE	CERTIFICATION RATING	MAX FRAME SIZE UNIT	
AWNING					WIDTH	HEIGHT
CRANK OUT	1.57	12.1	50	CW-PG50-FW	64"	96"
CRANK OUT	1.57	12.1	45	LC-PG45-FW	96"	64"
PUSH OUT	1.57	12.1	45	CW-PG45-FW	96"	64"
CRANK OUT	1.57	12.1	50	CW-PG50-FW	72"	72"
PUSH OUT	1.57	12.1	50	CW-PG50-FW	89"	48"
MULL ASSEMBLIES					WIDTH	HEIGHT
ALL PRODUCTS	1.57	12.1	40	CW-PG40-FW	168"	96"
ALL PRODUCTS	1.57	12.1	40	CW-PG40-FW	96"	168"

For the most complete technical information, visit marvin.com or talk with your Modern dealer.



INTERIOR VIEW – PUSH OUT CASEMENTS SHOWN IN EBONY WITH MATTE BLACK HARDWARE



EXTERIOR VIEW – CASEMENTS SHOWN IN EBONY

MODERN CASEMENT WINDOW

FEATURES

Crank Out and Push Out available

Sleek and modern form

Numerous sizes and configurations available, including right- or left-hand operating

Screens are intentionally designed to achieve a cohesive look with the window

Sash can slide across frame for easy wash mode

Frame recess accepts a drywall return

Horizontal or vertical ribbon mulling capabilities

HARDWARE FOR ALL CASEMENT

Concealed multi-point lock system

One locking lever to engage or disengage multi-point locks

Stainless steel hinges

Proprietary Crank Out and Push Out designed hardware

HARDWARE FOR PUSH OUT

Discreet, nested handle at the sash and frame

Optional low or mid-height handle and lock placement

HARDWARE FOR CRANK OUT

Exclusive rotating handle design

GLASS OPTIONS

Dual or triple-pane insulated glass

Interior cover depths vary based on glass thickness

Black spacer and dark silicone sealant

Low E1, E2, E3, ELR, or ERS glass options

Specialty glass: frosted, obscure, and gray or bronze tint

Argon or Krypton-Argon blend gas

CONFIGURATIONS AND MULLING

Casement to casement mullled frames 5⁹/₁₆" wide

Seamless mullled assemblies with aluminum reinforcement

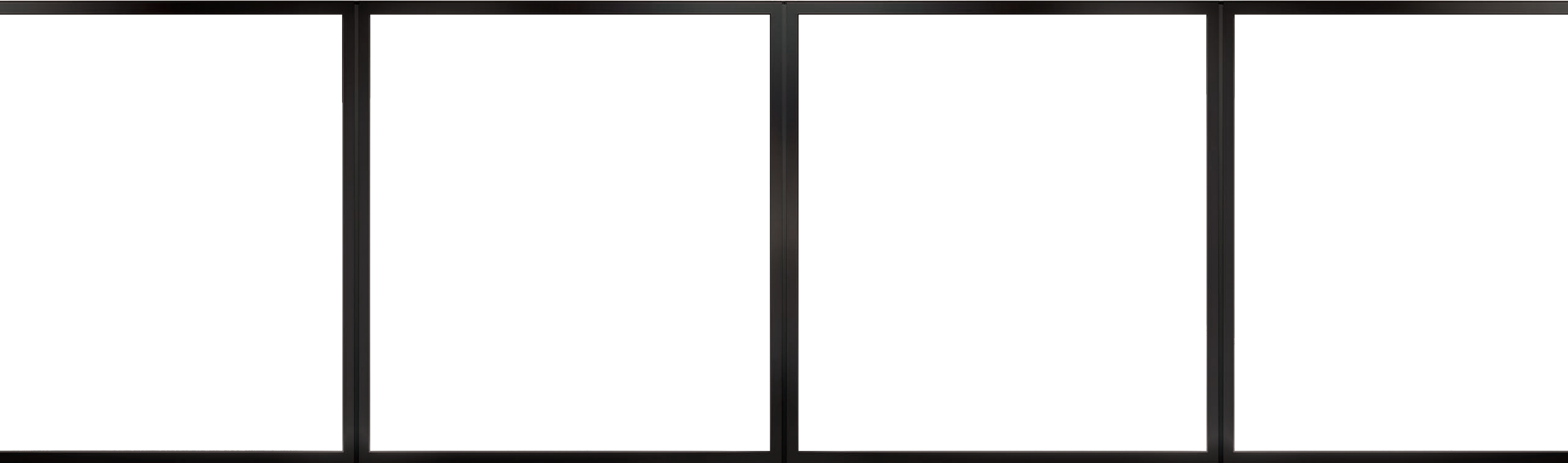
THERMAL PERFORMANCE

Dual-pane IG low E2 with Argon 0.28 U-Factor

UNIT TYPE	AIR TESTED TO PSF	WATER TESTED TO PSF	DESIGN PRESSURE	CERTIFICATION RATING	MAX FRAME SIZE UNIT	
CASEMENT					WIDTH	HEIGHT
CRANK OUT AND PUSH OUT	1.57	12.1	50	CW-PG50-FW	36"	102"
CRANK OUT AND PUSH OUT	1.57	12.1	50	CW-PG50-FW	40"	96"
CRANK OUT AND PUSH OUT	1.57	12.1	50	CW-PG50-FW	44"	92"
MULL ASSEMBLIES					WIDTH	HEIGHT
ALL PRODUCTS	1.57	12.1	40	CW-PG40-FW	168"	96"
ALL PRODUCTS	1.57	12.1	40	CW-PG40-FW	96"	168"

For the most complete technical information, visit marvin.com or talk with your Modern dealer.

MODERN DIRECT GLAZE WINDOW



EXTERIOR VIEW – DIRECT GLAZE SHOWN IN EBONY

FEATURES

Large expanses of glass for maximum views with numerous configurations and sizes available

Rectangular and polygon shapes

Frame recess accepts a drywall return

Horizontal or vertical ribbon mulling capabilities

Non-certified mulling capabilities

GLASS OPTIONS

Dual or triple-pane insulated glass
Interior cover depths vary based on glass thickness

Argon or Krypton-Argon gas blend

Black spacer and silicone sealant

Low E1, E2, E3, ELR, or ERS glass options

Specialty glass: frosted, obscure, and gray or bronze tint

MULLING

Mulled frames are less than 3" wide

Approximate 3" frame divider simulates a mulled Direct Glaze frame

CONFIGURATIONS

Rectangle/square

Isosceles triangle

Right triangle, right or left

Trapezoid, right or left

Pentagon

SIZING

Max frame size certified 141 3/8" x 93 3/8"

Jamb depth 4 1/2"

SINGLE UNIT PERFORMANCE RATINGS

Air tested to PSF 6.24

Water tested to PSF 7.5

Performance grade CW-PG40-FW

Max frame size height 93 3/8"

Max frame size width 141 3/8"

VERTICAL OR HORIZONTAL MULLED UNITS PERFORMANCE RATINGS

Air tested to PSF 1.57

Water tested to PSF 6.0

Performance grade CW-PG40-FW

Max frame size height 96"

Max frame size width 168"

Max tributary width or height 84"

THERMAL PERFORMANCE

Dual-pane IG low E2 with Argon 0.28 U-Factor

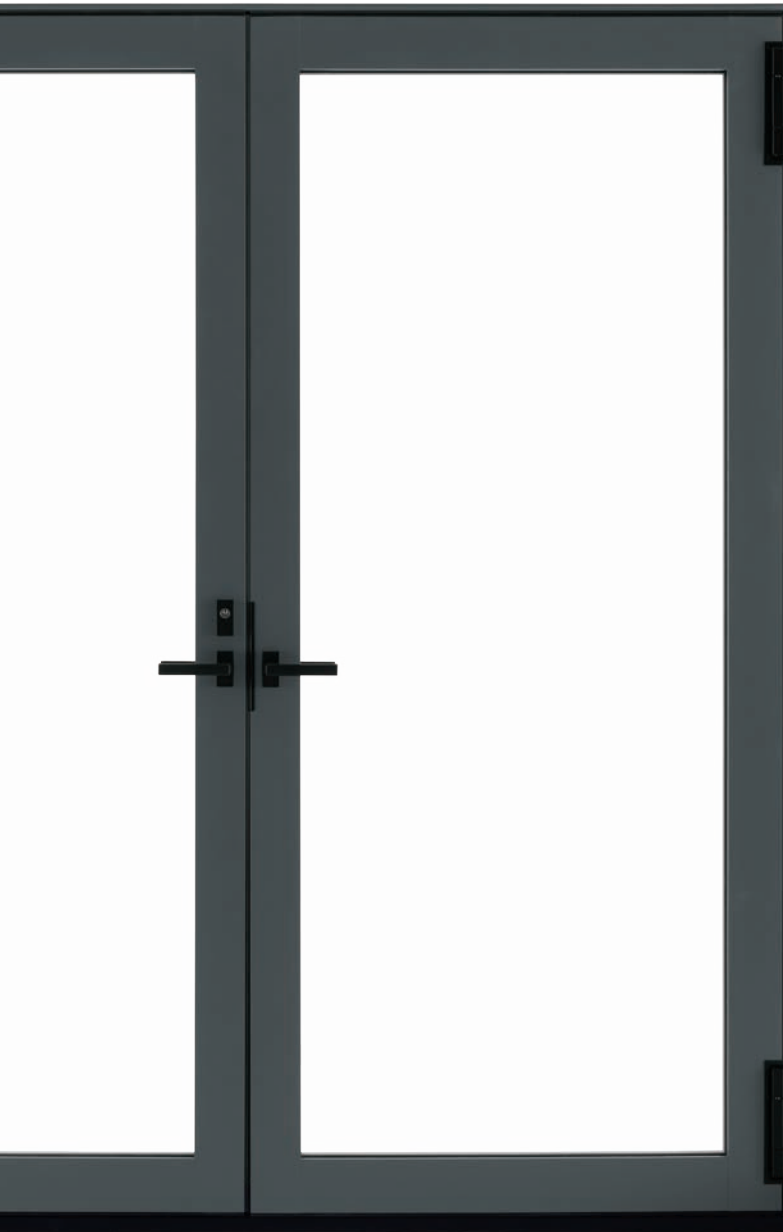
For the most complete technical information, visit marvin.com or talk with your Modern dealer.

PERFORMANCE ON A GRANDER SCALE.

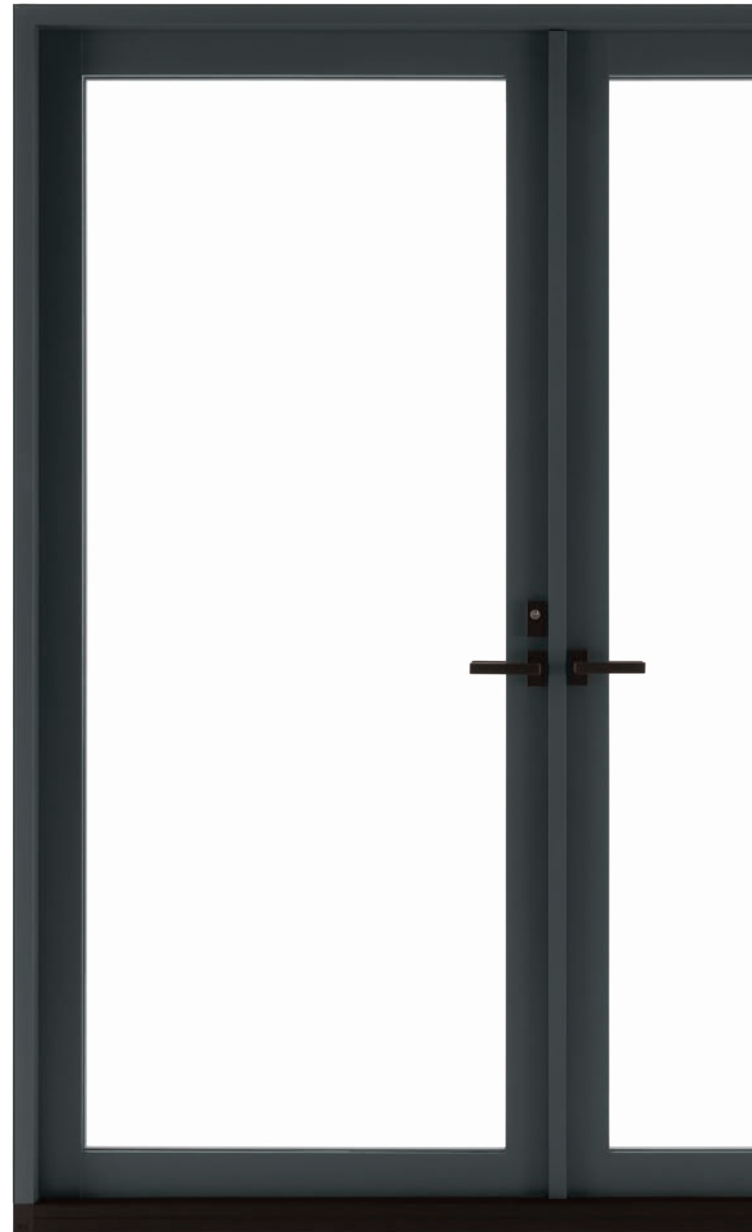
MODERN DOORS



MODERN SWINGING DOOR



EXTERIOR VIEW – OUTSWING DOOR SHOWN IN GUNMETAL WITH MATTE BLACK HARDWARE



EXTERIOR VIEW – INSWING DOOR SHOWN IN GUNMETAL WITH MATTE BLACK HARDWARE

FEATURES

- 1 and 2 panel units, inswing and outswing
- Unequal panel widths
- Minimalist handles
- Two 7" square barrel hinges for all door heights
- Low-profile, performance, and saddle sills

HARDWARE

- Minimalist hardware with multi-point lock
- Sleek design for unobstructed views
- 7" adjustable hinge

GLASS OPTIONS

- Dual or triple-pane insulated glass
- Argon or Krypton-Argon blend gas
- Black spacer and dark silicone sealant
- Low E1, E2, E3, ELR, or ERS glass options
- Specialty glass: frosted, obscure, and gray or bronze tint

ADD-ONS

- Lock status sensor
- Retractable screens

PERFORMANCE GRADES

O	Performance Sill	up to CW-PG40-FD
O	Low Profile Sill	up to CW-PG30-FD
O or X	Performance Sill	up to LC-PG40-SHD
O or X	Low Profile Sill	up to LC-PG30-SHD
XO OX XX	Performance Sill	up to LC-PG40-SHD
XO OX XX	Low Profile Sill	up to LC-PG30-SHD

CONFIGURATIONS AND SIZING

- Max operator size: 4' x 12'
- Max stationary size: 8' x 12'
- 1-2 panel configurations
- Unequal panel widths
- Door to door mulling

UNIT TYPE	MIN FRAME SIZE UNIT		MAX FRAME SIZE UNIT	
	WIDTH	HEIGHT	WIDTH	HEIGHT
UNI-DIRECTIONAL				
O	16"	16"	144"	144"
X	20"	49"	48"	144"
OX OR XO	34"	49"	173"	144"
XX	38"	49"	96"	144"

O = Stationary Panel X = Operating Panel
 * Panel quantity per unit limited to two panels



INTERIOR VIEW – MULTI-SLIDE DOOR SHOWN IN EBONY WITH MATTE BLACK HARDWARE

MODERN MULTI-SLIDE DOOR

FEATURES

- Large expanses of glass for maximum views with numerous configurations and sizes available
- Consistent panel thickness with narrow stiles and rails, regardless of configuration or size
- Minimalist hardware designed for superior functionality, features a sleek and modern form
- Low-profile, performance, and saddle sills in black or bronze

HARDWARE

- Minimal pull and latch handles
- Keyed or non-keyed options available
- Multi-point lock
- Quad rollers with end adjustment

GLASS OPTIONS

- Dual or triple-pane insulated glass
- Argon or Krypton-Argon blend gas
- Black spacer and dark silicone sealant
- Low E1, E2, E3, ELR, or ERS glass options
- Specialty glass: frosted, obscure, and gray or bronze tint

ADD-ONS

- Automatic control
- Lock status sensor
- Retractable screen

PERFORMANCE GRADES*

Uni-directional stacked	up to LC-PG45-SD
Uni-directional pocket	up to LC-PG45-SD
Bi-parting stacked	up to LC-PG40-SD
Bi-parting pocket	up to LC-PG40-SD

THERMAL PERFORMANCE

Dual-pane IG low E2 with Argon	0.28 U-Factor
--------------------------------	---------------

MULTI-SLIDE CONFIGURATIONS AND SIZING

- Over 30 configurations available
 - + Uni-Directional configurations: 1 to 6 panels, available in stacked or pocket
 - + Bi-Parting configurations: 2 to 10 panels, available in stacked or pocket
- Sized to order up to 6' x 12' panels
- Meeting stiles are less than 3" wide



For the most complete technical information, visit marvin.com or talk with your Modern dealer.

*Varies with sill type

MINIMUMS AND MAXIMUMS

MODERN MULTI-SLIDE DOOR STACKED

UNIT TYPE	MIN FRAME SIZE UNIT		MAX FRAME SIZE UNIT		MAX FRAME SIZE UNIT	
	WIDTH	HEIGHT	WIDTH	HEIGHT	WIDTH	HEIGHT
UNI-DIRECTIONAL						
			Based on 6ft wide panels		Based on > 6ft wide panels*	
OX OR XO	55 11/16"	62 3/64"	143 11/16"	144"	191 11/16"	120"
OXX OR XXO	80 13/16"	62 3/64"	212 13/16"	144"	284 13/16"	120"
OXXX OR XXXO	105 15/16"	62 3/64"	281 15/16"	144"	NA	NA
OXXXX OR XXXXO	131 1/16"	62 3/64"	351 1/16"	144"	NA	NA
OXXXXX OR XXXXXO	156 3/16"	62 3/64"	420 3/16"	144"	NA	NA

UNIT TYPE	MIN FRAME SIZE UNIT		MAX FRAME SIZE UNIT		MAX FRAME SIZE UNIT	
	WIDTH	HEIGHT	WIDTH	HEIGHT	WIDTH	HEIGHT
BI-PARTING						
			Based on 6ft wide panels		Based on > 6ft wide panels*	
OX - XO	109 3/4"	76 39/64"	285 3/4"	144"	381 3/4"	120"
OXX - XXO	160"	76 39/64"	424"	144"	568"	120"
OXXX - XXXO	210 1/4"	76 39/64"	562 1/4"	144"	NA	NA
OXXXX - XXXXO	260 1/2"	76 39/64"	700 1/2"	144"	NA	NA

O = Stationary Panel X = Operating Panel

MINIMUMS AND MAXIMUMS

MODERN MULTI-SLIDE DOOR POCKET

UNIT TYPE	MIN FRAME SIZE UNIT		MAX FRAME SIZE UNIT		MAX FRAME SIZE UNIT	
	WIDTH	HEIGHT	WIDTH	HEIGHT	WIDTH	HEIGHT
UNI-DIRECTIONAL						
			Based on 6ft wide panels		Based on > 6ft wide panels*	
PX OR XP	30 9/16"	68 19/64"	74 9/16"	144"	98 9/16"	120"
PXX OR XXP	55 11/16"	68 19/64"	143 11/16"	144"	191 11/16"	120"
PXXX OR XXXP	80 13/16"	68 19/64"	212 13/16"	144"	NA	NA
PXXXX OR XXXXP	105 15/16"	68 19/64"	281 15/16"	144"	NA	NA
PXXXXX OR XXXXP	131 1/16"	68 19/64"	351 1/16"	144"	NA	NA
PXXXXXX OR XXXXP	156 3/16"	68 19/64"	420 3/16"	144"	NA	NA

UNIT TYPE	MIN FRAME SIZE UNIT		MAX FRAME SIZE UNIT		MAX FRAME SIZE UNIT	
	WIDTH	HEIGHT	WIDTH	HEIGHT	WIDTH	HEIGHT
BI-PARTING						
			Based on 6ft wide panels		Based on > 6ft wide panels*	
PX - XP	59 1/2"	80 55/64"	147 1/2"	144"	195 1/2"	120"
PXX - XXP	109 3/4"	80 55/64"	285 3/4"	144"	381 3/4"	120"
PXXX - XXXP	160"	80 55/64"	424"	144"	NA	NA
PXXXX - XXXXP	210 1/4"	80 55/64"	562 1/4"	144"	NA	NA
PXXXXX - XXXXP	260 1/2"	80 55/64"	700 1/2"	144"	NA	NA

P = Pocket Panel X = Operating Panel

For the most complete technical information, visit marvin.com or talk with your Modern dealer.

MODERN DESIGN OPTIONS.

LIMITLESS POSSIBILITIES.



DIVIDED LITES

Achieve a unique aesthetic with divided lites on any Modern window or door. Select from a variety of customizable patterns, available on both dual pane and triple pane products.

Pictured right: Exterior detail of Simulated Divided Lites in Ebony

Pictured below: Modern Inswing door



SIMULATED DIVIDED LITES (SDL)

Aluminum interior + exterior

7/8" or 1 1/8" width

SIMULATED FRAME

Aluminum interior, high density fiberglass exterior

2 7/8" width



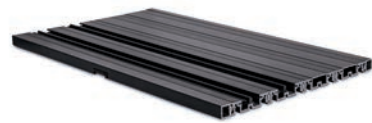
SILL OPTIONS

We've innovated every aspect of the new Modern line, right down to the smallest details. We offer flush sill options for both temperate and inclement conditions as well as a performance sill for areas where recessing isn't an option.

Modern door sills are engineered with our proprietary High Density Fiberglass for superior strength and thermal performance. Available in Ebony or Bronze with aluminum liners and covers.

Pictured right: Detail of the Flush Sill

MULTI-SLIDE DOOR SILL OPTIONS

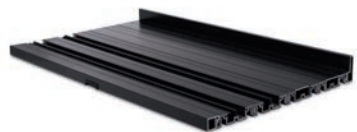


FLUSH SILL

Recommended for protected areas

Not certified for performance

ADA compatible when properly installed



PERFORMANCE SILL

Recommended for areas where performance is needed and the sill is not recessed

Rated and certified for performance

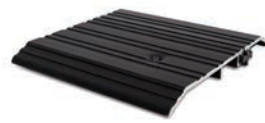


HIGH PERFORMANCE SILL

Rated and certified for superior performance

ADA compatible when properly installed

SWINGING DOOR SILL OPTIONS

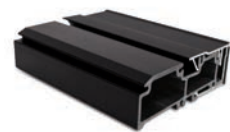


SADDLE SILL

Not certified for performance

ADA compatible when properly installed

Available in dark bronze in thermally broken aluminum



LOW-PROFILE SILL

Rated and certified for performance

ADA compatible when recessed



PERFORMANCE SILL

Rated and certified for performance

Not ADA compatible



CURATED COLORS

Our intentionally selected color palette evokes the elemental nature of modern design. Choose split interior and exterior color finishes or matching finishes designed to coordinate.

INTERIOR COLORS • LOW-GLOSS ALUMINUM

EXTERIOR COLORS • HIGH-DENSITY FIBERGLASS





HARDWARE FINISHES

From low-profile handles to nested locks, our hardware is designed to complement clean, modern lines while delivering reliable performance. Select from a variety of finishes and styles to fit your vision.

Pictured above: Casement and Awning Crank Out hardware and Multi-Slide door interior and exterior multi-point lock system handles

SCREENS

All screens are intentionally designed for uninterrupted views, ease of use, and a sleek modern look.

Pictured right: Modern Awning window

Pictured below: Modern Casement Crank Out window



CASEMENT AND AWNING PUSH OUT

Concealed screen frame does not disrupt sightlines or view

High transparency mesh

Innovative latch color matched to the interior

Concealed hinges support operability

CASEMENT AND AWNING CRANK OUT

Concealed screen frame does not disrupt sightlines or view

High transparency mesh

Innovative latch color matched to the interior

Crank in and out operability





THIS IS ONLY THE BEGINNING.

EXPERIENCE IT AT

YOUR MODERN DEALER TODAY.



At Marvin, we're driven to imagine and create better ways of living by designing windows and doors that open new possibilities for the people who use them.

To learn more visit us at **MARVIN.COM/MODERN**

19983042

Marvin Lumber and Cedar Co., Warroad, MN 56763.

©2022 Marvin Lumber and Cedar Co., LLC. All rights reserved.

®Registered trademark of Marvin Lumber and Cedar Co., LLC.

Information regarding status of patent applications, as well as product features and specifications, is subject to change without notice. April 2022.

For warranty information, please visit marvin.com

Please note: Colors shown in printed materials are simulations and may not precisely duplicate product or finish colors. Contact your local Modern dealer to view actual product and finish color samples.